



Launch area:	Individual launch	Sunrise/Sunset:	6:11:00 AM
Launch period:	Opens at 06:11	Min. ILP → all goals:	1km
PZs in force:	all active	Next briefing:	5:30
Solo flight:	not required	QNH	1014

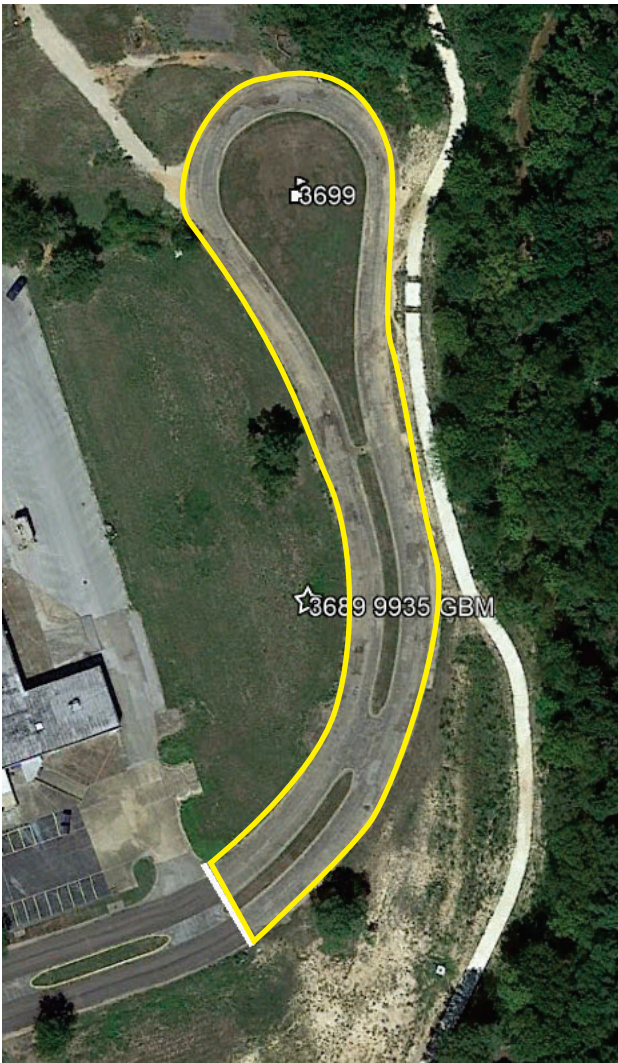
Task:	6 MDD Minimum Distance Double Drop (Rule 15.15)	Task order:	in order
a. Description of scoring area(s)	3994 3903 / 9427 Drop one marker in each area "A" or one in each "B" Paper is out		
Scoring period: ends at 07:30	Scoring Method	MMA:	See Sketch
Scoring area: See Sketch	Limited Area	Marker Color:	White
		Marker Drop:	Free
		Loggermark #:	N/A

Task:	7 FON Fly On (Rule 15.5)	Task order:	in order
a. Method of declaration (also see Section II.12 and 12.3)	Loggergoal ONE		
b. Number of goals permitted	1		
c. Goals available for declaration	Published list or 4x4 coordinate <u>with altitude</u> . Minimum goal altitude 900' msl		
d. Declaration point requirement	None		
e. Minimum and maximum distance between declaration point and declared goal(s)	2km min., no Max	MMA:	N/A
f. Minimum and maximum distances of declared goal(s) from any other targets noted on TDS.	1km min., no max.	Marker Color:	N/A
Scoring period: ends at 08:00	Scoring Method	Marker Drop:	N/A
Scoring area: Entire Contest Area	3D	Loggermark #:	1

Task:	8 GBM Gordon Bennett Memorial (Rule 15.8)	Task order:	in order
a. Position of goal/target	3689 / 9935 (near 3699)		
b. Description of scoring area(s)	See Sketch		
Scoring period: ends at 08:15	Scoring Method	MMA:	See Sketch
Scoring area: See Sketch	Limited Area	Marker Color:	Yellow
		Marker Drop:	Free
		Loggermark #:	N/A

Task:	9 FON Fly On (Rule 15.5)	Task order:	in order
a. Method of declaration (also see Section II.12 and 12.3)	Loggergoal TWO		
b. Number of goals permitted	1		
c. Goals available for declaration	Published list or 4x4 coordinate <u>with altitude</u> . Minimum goal altitude 900' msl		
d. Declaration point requirement	South of grid line 0200		
e. Minimum and maximum distance between declaration point and declared goal(s)	2km min., no Max	MMA:	N/A
f. Minimum and maximum distances of declared goal(s) from any other targets noted on TDS.	1km min., no max.	Marker Color:	N/A
Scoring period: ends at 09:00	Scoring Method	Marker Drop:	N/A
Scoring area: Entire Contest Area	3D	Loggermark #:	2

Task:	10 HWZ Hesitation waltz (Rule 15.3)	Task order:	in order
a. Position of various set goals/targets	3185 / 0392 (near 3103) 3458 / 0587 (near 3405)		
Scoring period: ends at 09:00	Scoring Method	MMA:	Lesser 40m or Conf. of Fld
Scoring area: Entire Contest Area	2D/3D	Marker Color:	Orange
		Marker Drop:	Free
		Loggermark #:	3



Scoring area is:

Hard surface of the road
and grass contained by
the hard surface

